



PROFESSIONAL
THINKING

PRODUCT SHEET EKF 1016 G UD

TECNOEKA SRL - VIA MARCO POLO, 11 - 35010 BORGORICCO - PADOVA - ITALY - TEL. +39 049 5791479 +39 049 9300344 - FAX +39 049 5794387 - E-MAIL: INFO@TECNOEKA.COM - WWW.TECNOEKA.COM - WWW.TECNOEKA.RU

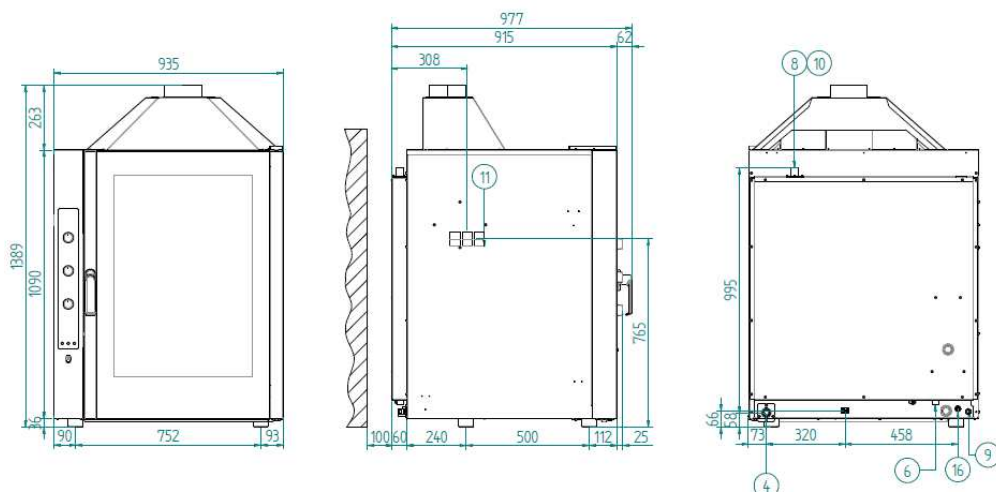
EKF 1016 G UD - GAS CONVECTION OVEN WITH STEAM 10 TRAYS/GRIDS (1/1 GN or 600x400 mm)

EKA EVOLUTION
GAS LINE

COOKING AND BAKING

Bread, fine pastries but also pizza and leavened product, meal or fish: you can cook in large quantities (up to 10 trays 1/1 GN or 600x400 mm) without sacrificing valuable time.

Robust and reliable allows maximum diversification of cooking as needed thanks to the direct steam feature.



LEGEND

1	USB PORT	11	DON'T CLOG UP VENTILATION OPENINGS
2	SERIAL PORT	12	WATER INLET MAX. 200 kPa
3	PLUG FOR CORE PROBE	13	SOFTENED WATER INLET MAX. 200 kPa
4	WATER OUTLET TUBE	14	BOILER CLEANING INLET
5	WASHING WATER INLET	15	DON'T OPEN CAP WHILE WORKING
6	SOFTENED WATER INLET	16	GAS INLET THREADED JOINT 3/4"
7	WATER INLET	17	POWER SUPPLY TO TOP OVEN
8	STEAM OUTLET	18	PRE-CARVED HOLE FOR BOTTOM OVEN POWER SUPPLY
9	ELECTRIC CABLE FIXER	19	STEAM SUCTION PIPE
10	CAUTION! HOT SURFACE		





PROFESSIONAL
THINKING

PRODUCT SHEET EKF 1016 G UD

TECNOEKA SRL - VIA MARCO POLO, 11 - 35010 BORGORICCO - PADOVA - ITALY - TEL. +39 049 5791479 +39 049 9300344 - FAX +39 049 5794387 - E-MAIL: INFO@TECNOEKA.COM - WWW.TECNOEKA.COM - WWW.TECNOEKA.RU

DIMENSIONAL FEATURES				FUNCTIONAL FEATURES			
DIMENSIONS	W	D	H	MAIN SOURCE	MULTIGAS (NATURAL GAS OR LPG SETTING, NOZZLES INCLUDED)		
OVEN DIMENSIONS (mm)	935	978	1388	SUPPORT SOURCE	ELECTRICITY		
CARDBOARD BOX DIMENSIONS WITH PALLET (mm)	997	1037	1420	CAPACITY	N° 10 TRAYS/GRIDS (1/1 GN or 600x400 mm)		
OVEN DIMENSIONS (inches)	36,51	38,38	54,64	TYPE OF COOKING	VENTILATED		
CARDBOARD BOX DIMENSIONS WITH PALLET (inches)	39,25	40,82	55,90	STEAM (SEE LEGEND)	DIRECT STEAM CONTROLLED BY KNOB (5 LEVELS)		
OVEN WEIGHT (kg)	150,6			COOKING CHAMBER	AISI 304 STAINLESS STEEL		
PACKED OVEN WEIGHT (kg)	168,6			WATER OUTLET	Ø 30 mm TUBE		
OVEN WEIGHT (lbs)	332,01			STEAM OUTLET	DIRECT		
PACKED OVEN WEIGHT (lbs)	371,69			TEMPERATURE	100 ÷ 260°C		
DISTANCE BETWEEN RACK RAILS (mm)	75			TEMPERATURE CONTROL	THERMOSTAT		
FAN DIMENSION (mm)	Ø 197 - NR. 36 BLADES			CONTROL PANEL	ELECTROMECHANIC – LEFT SIDE		
CENTER-TO-CENTER DISTANCE BETWEEN FEET (mm)	752			N° OF PROGRAMS	/		
					PROGRAMMABLE COOKING STEPS	/	
ELECTRICAL FEATURES				PRE-HEATING TEMPERATURE		/	
POWER SUPPLY (kW)		0,7			PRE-HEATING FUNCTION		/
THERMAL SUPPLY (kW)		18			DOOR	RIGHT SIDE OPENING – ALL GLASS DOOR	
FREQUENCY (Hz)		50 OR 60 (ON DEMAND)				VENTILATED	
VOLTAGE (Volt)		AC 220/230				INSPECTIONABLE GLASS	
N° OF MOTORS		2 BIDIRECTIONAL				/	
RPM		2800			FEET		NOT ADJUSTABLE
					EQUIPMENT		
N° OF RESISTORS	CIRC.	/	/	LATERAL SUPPORTS		1RIGHT + 1LEFT	
	TOP+GRILL	/	/	CABLE		SINGLE-PHASE [5G 2,5] - L=1150 mm	
	SOLE	/	/	MANUAL WASHING SET UP			
BOILER		/			REMOVABLE DRIP BOX		
LIMIT CONTROL		BIPOLAR WITH MANUAL RESET			EXTRACTOR HOOD		
PROTECTION AGAINST WATER		IPX3			NOZZLE FOR GAS ADAPTATION		
LIGHTING		NR.2 HALOGEN LIGHT BULB (IN THE DOOR)			OPTIONAL		
PLUS				ALUMINIUM TRAY (600x400x20 mm)		COD. KT9P/A	
				PERFORATED ALUMINIUM TRAY (600x400x20 mm)		COD. KTF8P/A	
STAINLESS STEEL COOKING CHAMBERO				5 LANES PERFORATED ALUMINIUM TRAY (600x400x20 mm)		COD. KTF9P	
DOOR WITH INSPECTIONABLE GLASS				CHROMED GRID (600x400 mm)		COD. KG9P	
ADJUSTABLE DOOR HINGES				5 LANES AISI 304 CHROMED GRID (600x400 mm)		COD. KG5CPX	
QUICK FASTENING OF LATERAL SUPPORTS				TABLE		COD. EKT 1111 – COD. EKTR 1111 – COD. EKTS 1111 – COD. EKTRS 1111	
EMBEDDED GASKET				PROOFER		COD. EKL 1264 – COD. EKL 1264 R	
FORCED COOLING SYSTEM OF INNER PARTS				AIR REDUCER		COD. EKRP/A	
IPX 3				SPRAY KIT WITH SUPPORT		COD. EKKD	
MANUAL WASHING SET UP							
NEW DESIGN OF COOKING CHAMBER							
CB CERTIFICATION							
EC ACCORDING TO THE EUROPEAN GAS APPLIANCES 2009/142/EC							

LEGEND

STEAM



A pipe sprays the water directly on moving fans.
It's ideal for roast meat, fish and steamed vegetables.